



Introduction to SUSCOD

SUstainable COastal Development in Practice

Essex Coastal Conference – Partnership Working on the Coast

Clacton-on-Sea, September 25, 2013

Lilian Bernhardt, Province of Noord-Holland



Contents

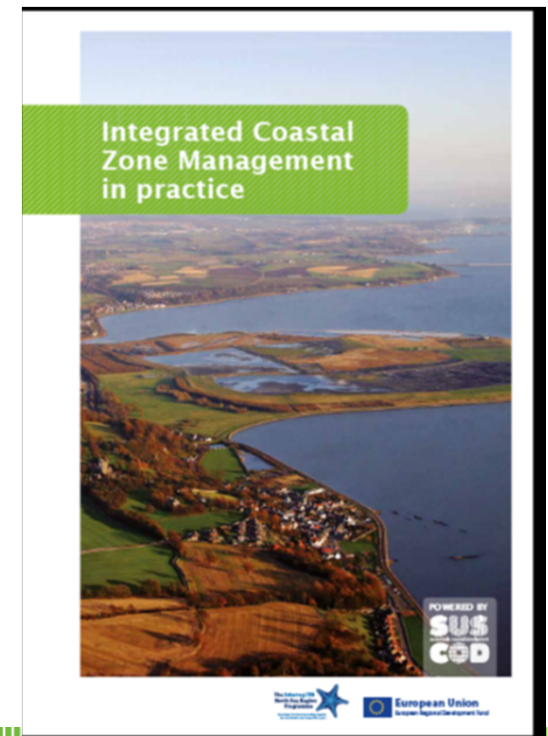
1. Background & aims SUSCOD
2. Partners
3. Outputs/deliverables



1. Background & aims SUSCOD

- Project Schedule: 2009-2013
- Goal: fully utilize opportunities for coastal development + knowledge exchange on ICZM:
 1. A broad 'holistic' perspective
 2. A long term perspective
 3. Adaptive management during a gradual process
 4. Reflect local specificity
 5. Work with natural processes
 6. Participatory planning
 7. Support & involvement of administrative bodies
 8. Use of a combination of instruments
- Supported by INTERREG IVB NSR

programme



2. Partners

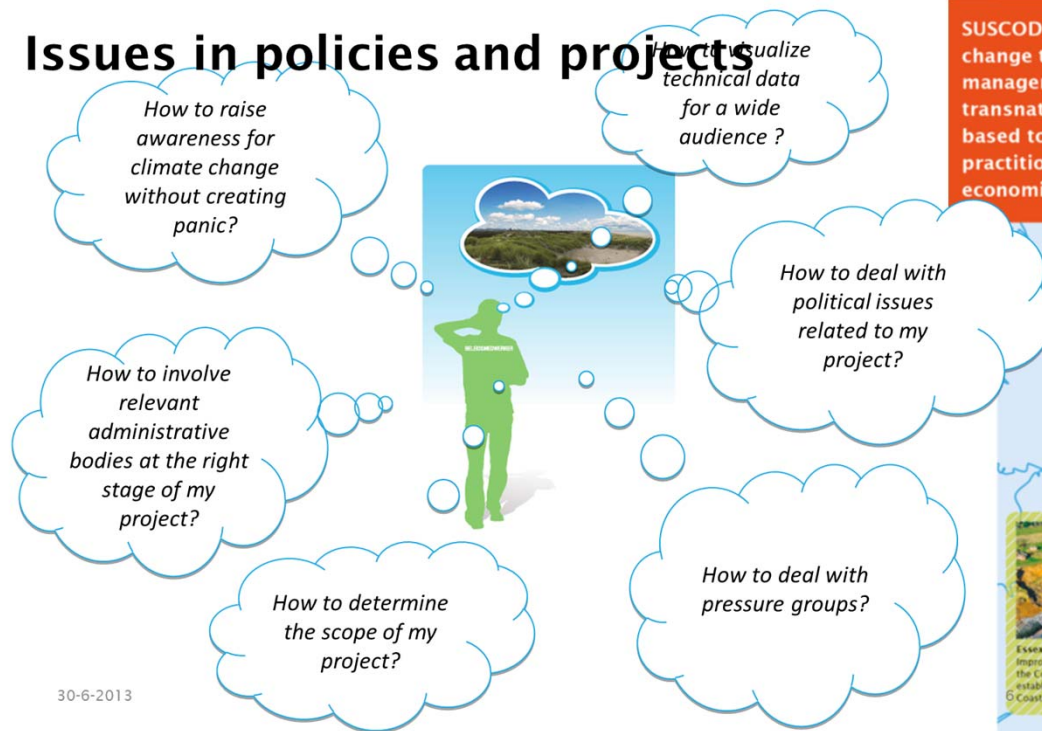
1. Coastal Division of Flemish Ministry of Transport and Public Works (Belgium)
2. Essex County Council (England)
3. Region Zealand (Denmark)
4. Fife Coast and Countryside Trust (Scotland)
5. Flanders Hydraulics Research (Belgium)
6. Province of North-Holland (The Netherlands; lead partner)
7. City of Strömstad (Sweden)



3. Outputs/deliverables

1) Case studies and pilot projects

Issues in policies and projects



30-6-2013

2) ICZM-Assistant



SUSCOD brings together partners that want to change the application of integrated coastal zone management (ICZM), through a well coordinated transnational team approach. A practical web based tool will allow coastal development practitioners to fully realise coastal potentials: economical, social and environmental.



Fife Coast and Countryside Trust
Practical solutions at the local level



Essex County Council
Improving ICZM across the County through the establishment of an Essex Coastal forum



The Flemish coast
A master plan for the entire Flemish coast to strengthen the sea defences and improve the protection against flooding



The province of Noord-Holland
Improved, more integrated results on coastal zone projects



North Bohuslan - Sweden
Increase permanent population and attract even more tourists

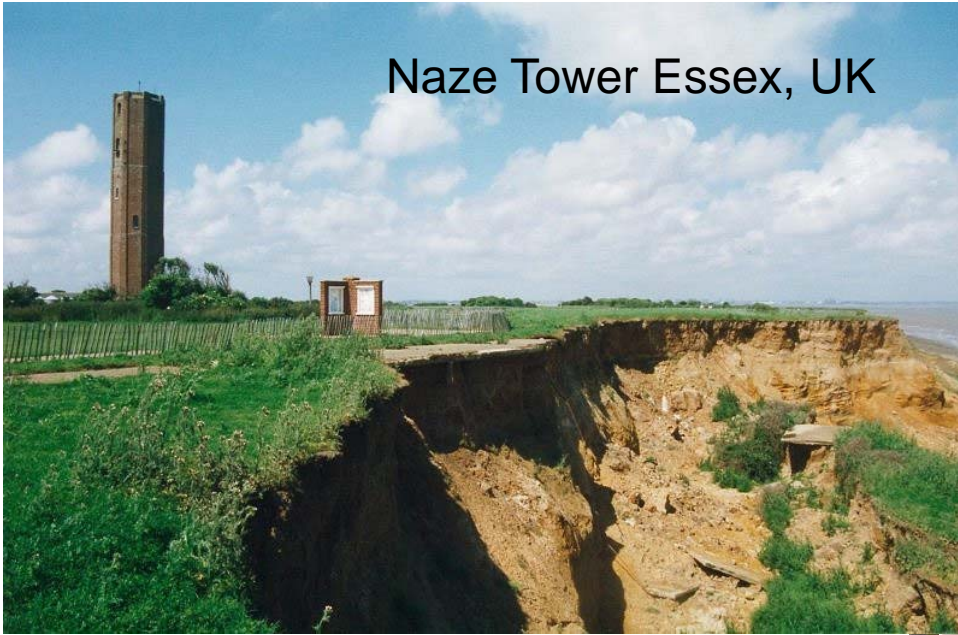


Region Zealand
Analyze the effects of climate change on the management of the coast



Get connected
Sign up for our newsletter
Connect and expand your network
Share knowledge, find information

Naze Tower Essex, UK



North Bohuslän, Sweden



Petten, The Netherlands



Wenduine, Belgium

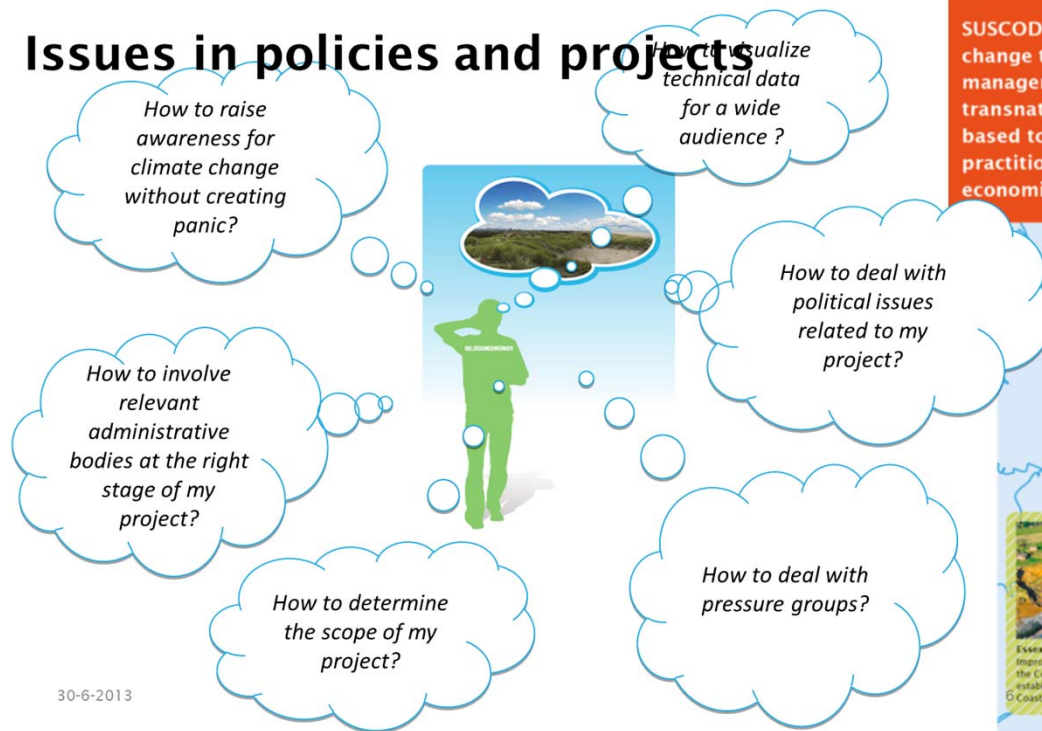


© Rijkswaterstaat - 18 oktober 2005 - 12.34 uur

3. Outputs/deliverables

1) Case studies and pilot projects

Issues in policies and projects



30-6-2013

2) ICZM-Assistant



SUSCOD brings together partners that want to change the application of integrated coastal zone management (ICZM), through a well coordinated transnational team approach. A practical web based tool will allow coastal development practitioners to fully realise coastal potentials: economical, social and environmental.



Fife Coast and Countryside Trust
Practical solutions at the local level



Essex County Council
Improving ICZM across the County through the establishment of an Essex Coastal forum



The Flemish coast
A master plan for the entire Flemish coast to strengthen the sea defences and improve the protection against flooding



North Bohuslan - Sweden
Increase permanent population and attract even more tourists



The province of Noord-Holland
Improved, more integrated results on coastal zone projects



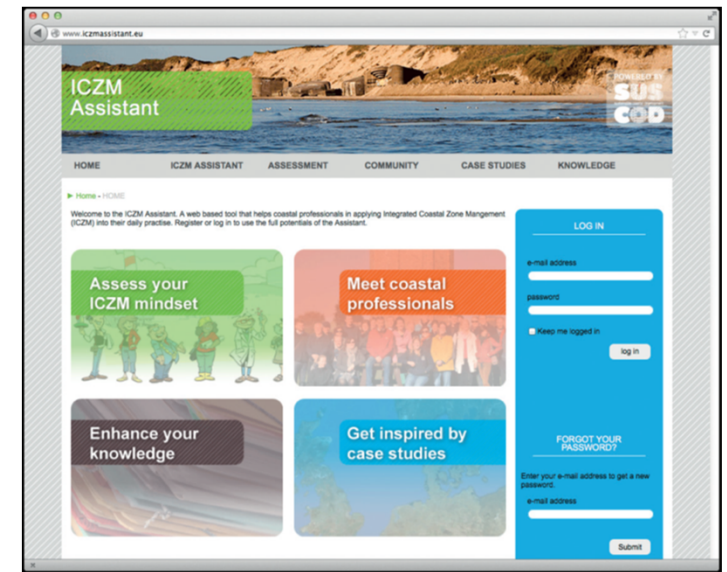
Region Zealand
Analyze the effects of climate change on the management of the coast



Get connected
Sign up for our newsletter
Connect and expand your network
Share knowledge, find information

ICZM Assistant

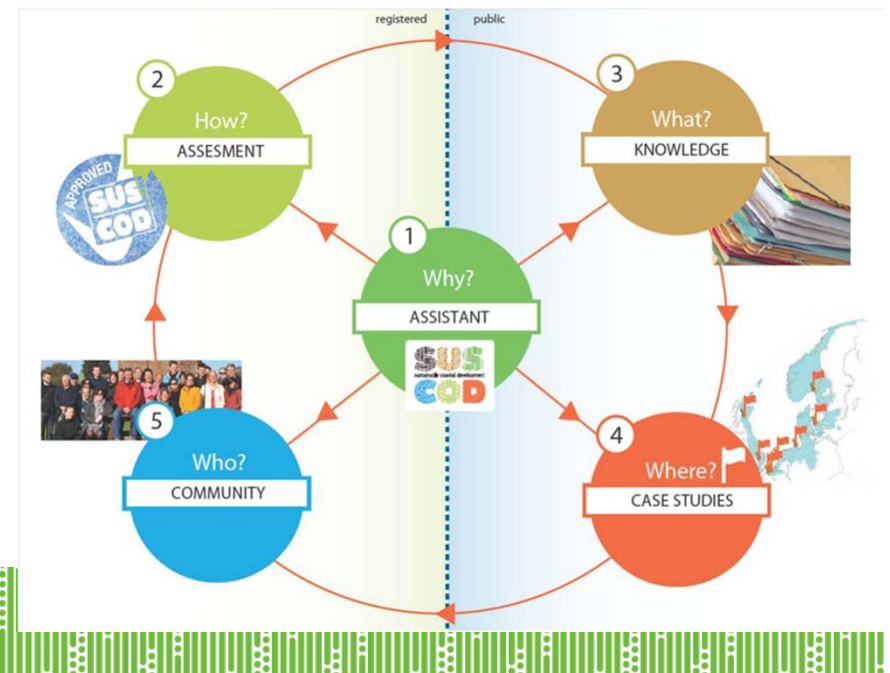
- Visible part and result of the SUSCOD project
- A web based tool
- Assisting the coastal professional
- ICZM principles brought into practice
- Interconnecting Projects, Knowledge, People



www.ICZMassistant.eu

To read more: >get our Brochure

22-10-2013





Questions?

More information:

Lilian Bernhardt

bernhardil@noord-holland.nl

phone: +31 6 18609418