



Marine  
Management  
Organisation



## Update on Marine Plans and what they mean for Essex

Essex Coastal Conference – ‘Partnership Working on the  
Coast’

Hannah Marriott

Marine Planner  
25 September 2013



# Current MMO planning activity

- Introduction
- MMO – who we are and what we do
- Structure
- Legislative basis for marine planning
- Stakeholder Engagement
- Approach to Marine Planning
- What's in the plan?
- Process
- Lessons Learnt

## The South Marine Plan Area

## What this means for Essex

# Introduction

- Who we are
- **Planning and Plan Areas**, where and why
- **East Inshore and Offshore Plan Areas**, where it all began
- Activity summary to date
- **Draft East Inshore and Offshore Marine Plans**
- **South Inshore and Offshore Plan Areas**, Location, Identification, Implications from the East
- **The way forward**: future activities and the areas not currently being planned

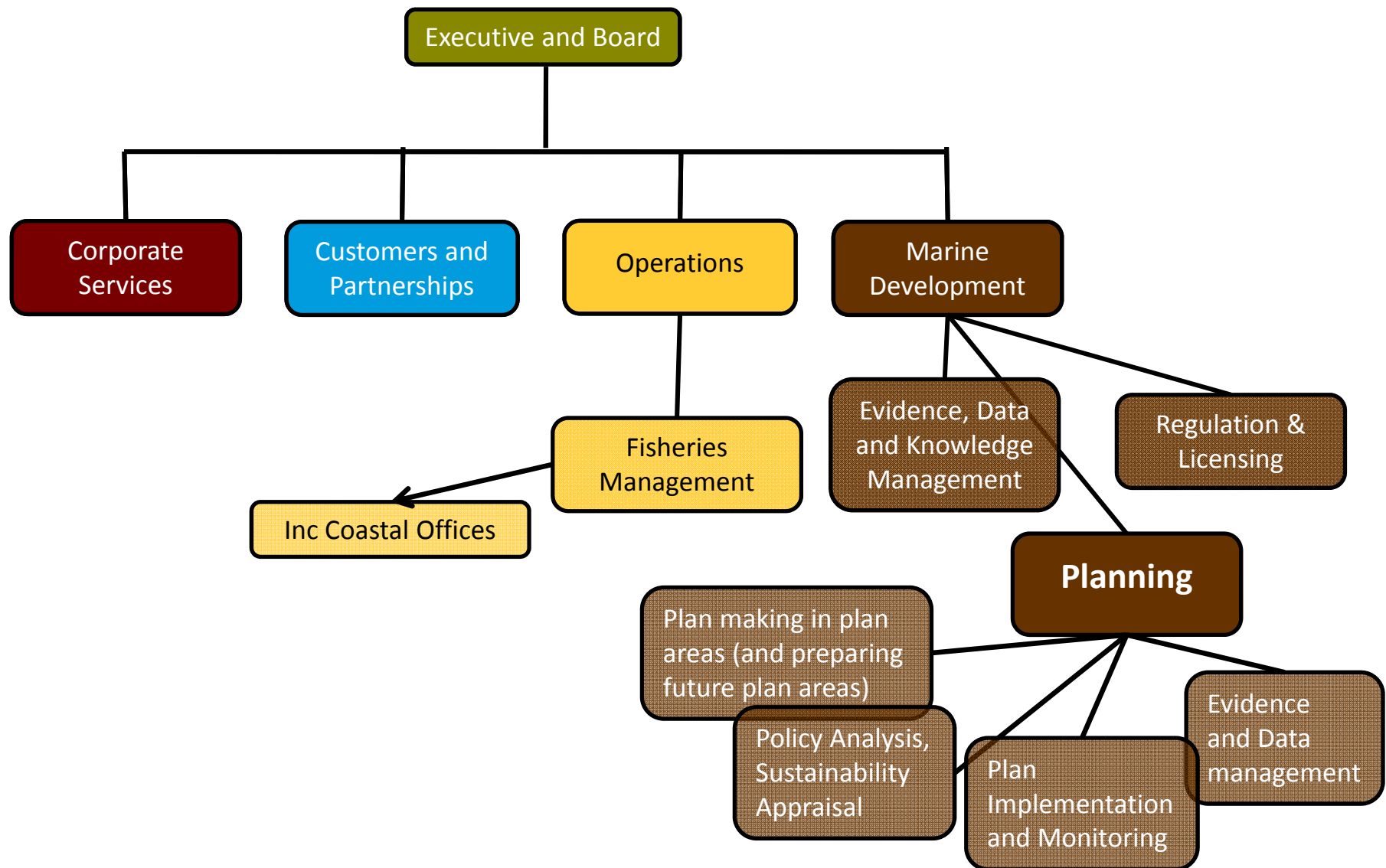


# The Marine Management Organisation – who we are and what we do

- NDPB sitting primarily under Defra but with cross-departmental support including DCLG
- Main responsibilities:
  - implementing a new marine planning system
  - implementing the marine licensing duties
  - managing UK fishing fleet capacity and UK fisheries quotas
  - manage a network of marine protected areas with NE and JNCC
  - responding to marine emergencies



# The MMO- organisational structure



# Legislative basis for Marine Planning

MCAA

- Marine and Coastal Access Act provides legislative basis for a marine planning system

MPS

- Marine Policy Statement is the UK framework for marine plans and taking decisions

Marine  
Plans

- Marine Plans will translate the MPS into detailed policy and spatial guidance for each Marine Plan area

- Marine plans will inform decision-making relating to a plan area. The MPS does this in absence of a plan.
- Development of marine plans delegated to MMO, but Defra Secretary of State is the Planning Authority

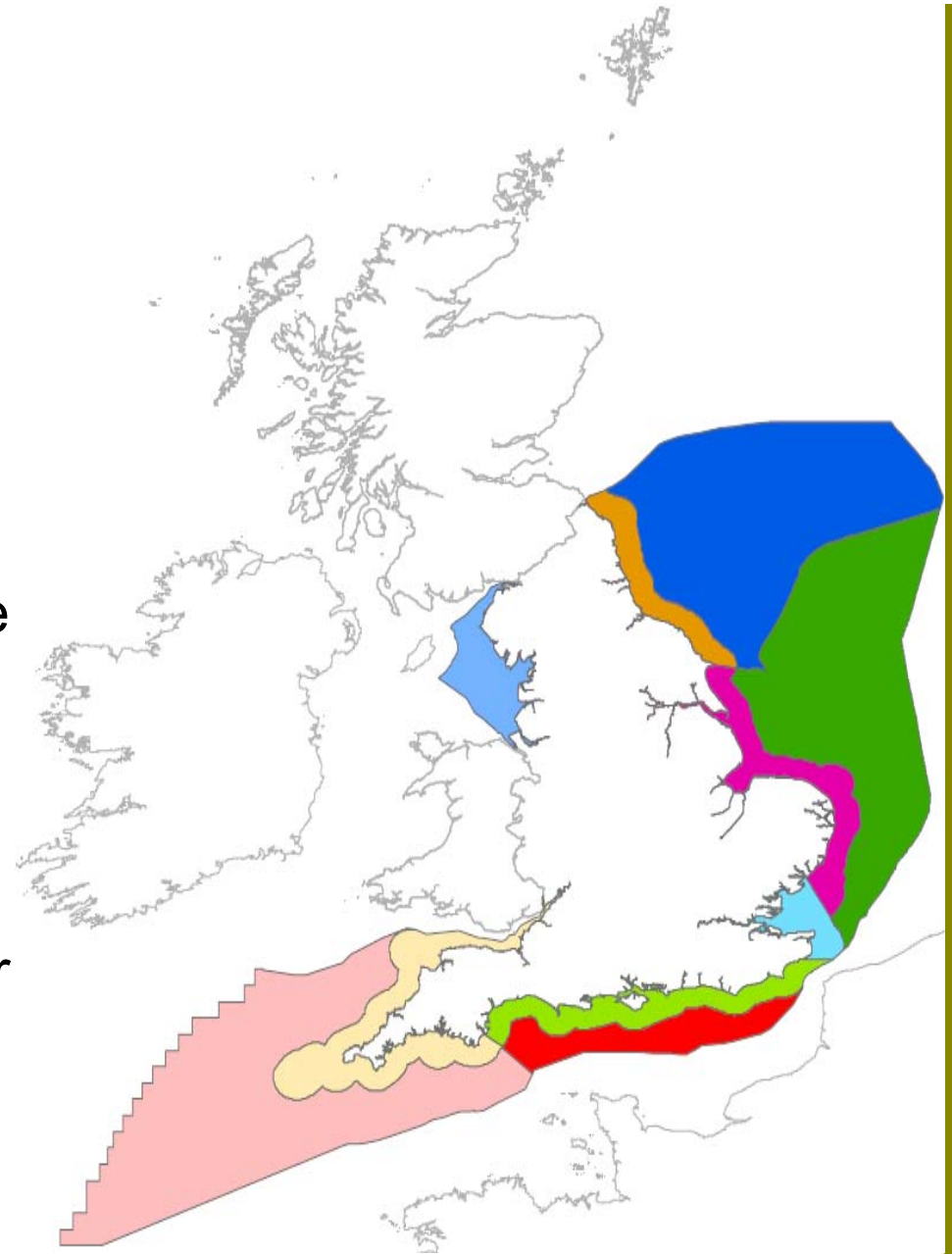
# Where and When?

## Areas/Boundaries

- English marine area 231,200 KM sq
- 11 areas (10 plans)
- Limit of tidal influence to UK REZ
- Inshore out to 12nm, Offshore >12nm 200nm (or agreed median line)

## Overall timetable

- Estimate 2 years 9 months for each plan
- Assume two plan areas at a time (Inshore and Offshore)
- Evaluate  $\leq 3$  years  $\Rightarrow$  Review?



# Stakeholder engagement – plan areas

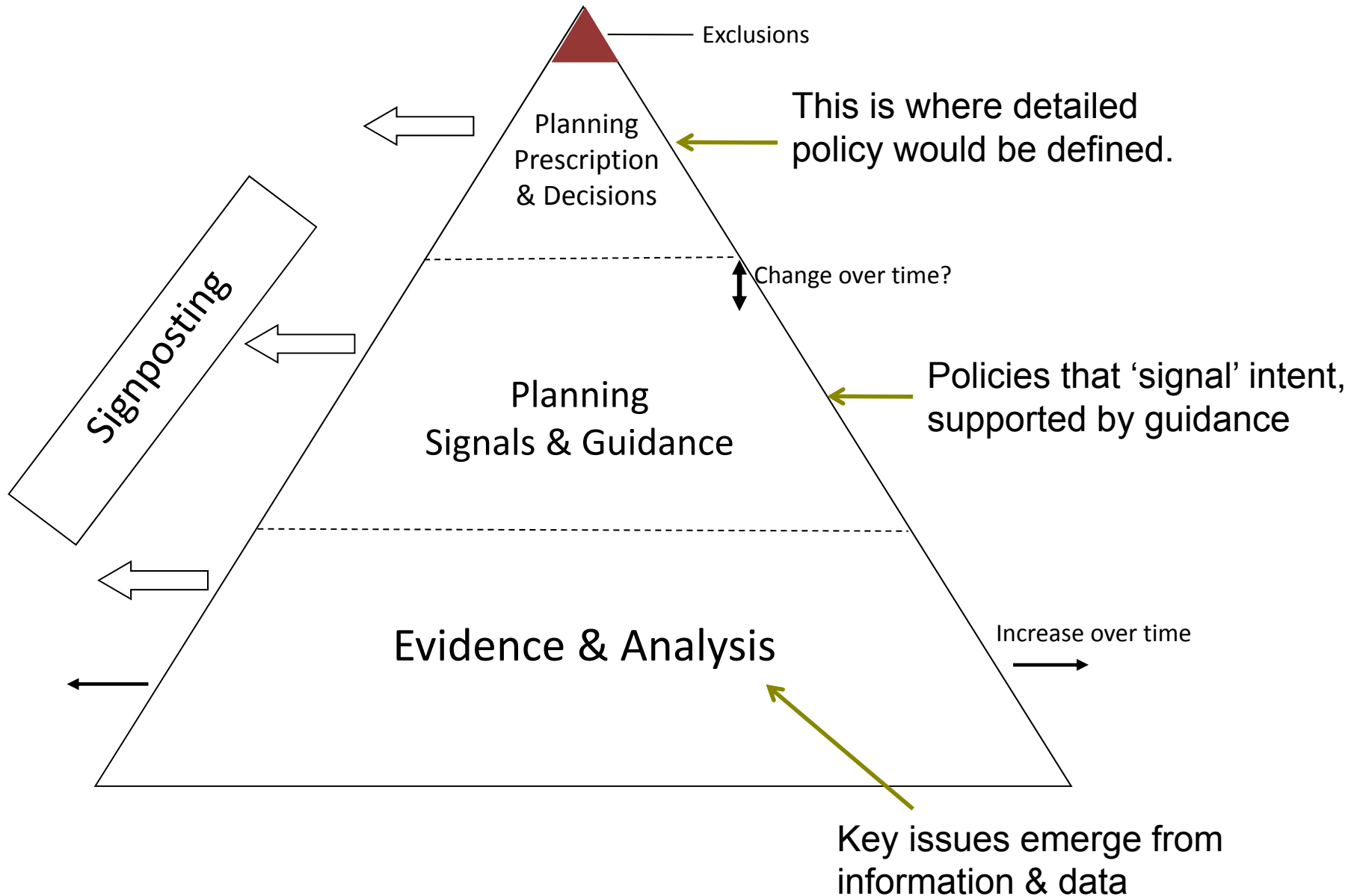
- **Statements of Public Participation (SPP)**
  - informs people of how and when they can become involved
  - published April 2011 for the East
  - signed off by Government (Secretary of State, Defra)
  
- **Local stakeholder engagement**
  - Individual interests and groups
  - Work with existing partnerships, links to other projects (MCZs,R3)
  - Range of meetings, workshops, events and Liaison officers
  - Identifying contacts, evidence, issues, aspirations etc



# Stakeholder engagement in the East - what have we done so far?

- Series of five **stakeholder workshops** attended by over 300 people
- **International workshops** with France, Belgium, Netherlands, Germany and Denmark and the US
- 350 **One-to-one meetings** with marine sector reps, such as, offshore wind, fishing, recreation, aggregates and cabling
- 12 public **drop-in sessions** across the East for over 900 people
- More than 2,000 comments from 70 different organisations in 2012 from one informal consultation
- Local **liaison officers** based in Lowestoft, Lincs and Grimsby met with hundreds of local stakeholders, attended meetings and events
- 9 public **drop-in sessions** across the East launching consultation.

# Approach to marine planning



# Effects of the East marine plans?

- Will inform and guide the regulation and use of the marine plan areas
- Support greater integration between marine activities and land use – including compliance with the Localism Act (Duty to co-operate)
- Applied through enforcement and authorisation decisions made by public authorities
  - Obligations on all public bodies that make decisions in England's marine area
  - If representations requested from MMO, regard must be given to the marine plans

# Marine Planning Components

*National*

*Plan Area*

Marine  
Policy  
Statement

Statement of  
Public  
Participation

Sustainability  
Appraisal

Economic  
Assessment

**Strategy Document: Vision, Objectives,  
Policies and Maps**

Guidance

Implementation  
and Monitoring  
Plan

Monitoring  
Reports



# East Inshore and Offshore Draft Marine Plans Structure

- Ch 1 Background and overview
- Ch 2 Vision and objectives, their background and development
- Ch 3 Plan policies

For each policy the following is included;

- role and scope,
- maps where applicable
- Justification and signposting where applicable

Some objective led policies and some sector specific.

- Ch 4 Implementation and Monitoring, Review and Evidence



# Supporting Documents

- Executive summary
- Statement of Public Participation
- Sustainability Appraisal
- Habitats Regulations Assessment
- Plan appraisal document
- Outline approach to implementation and monitoring
- Beginners guide to the marine plans – linking interests to appropriate parts of the marine plan
- Policy Implications Table

# Planning Progress



# Timeline and engagement South Plan Areas

- South SPP adopted April 2013
- Spring-Summer 2013 Call for evidence
- Appointment of implementation and monitoring officers
- Spring 2013/Autumn 2013 – ongoing engagement in plan areas and data collection ★
- Autumn/Winter 2013 – Evidence and Issues identification
- Winter 2013/Spring 2014 – Evidence and Issues finalised
- Spring 2014 – Vision and Objectives development ★
- Summer – Options and policies development
- Spring 2015 – Draft Plan development

★ Likely workshop

# Lessons Learnt

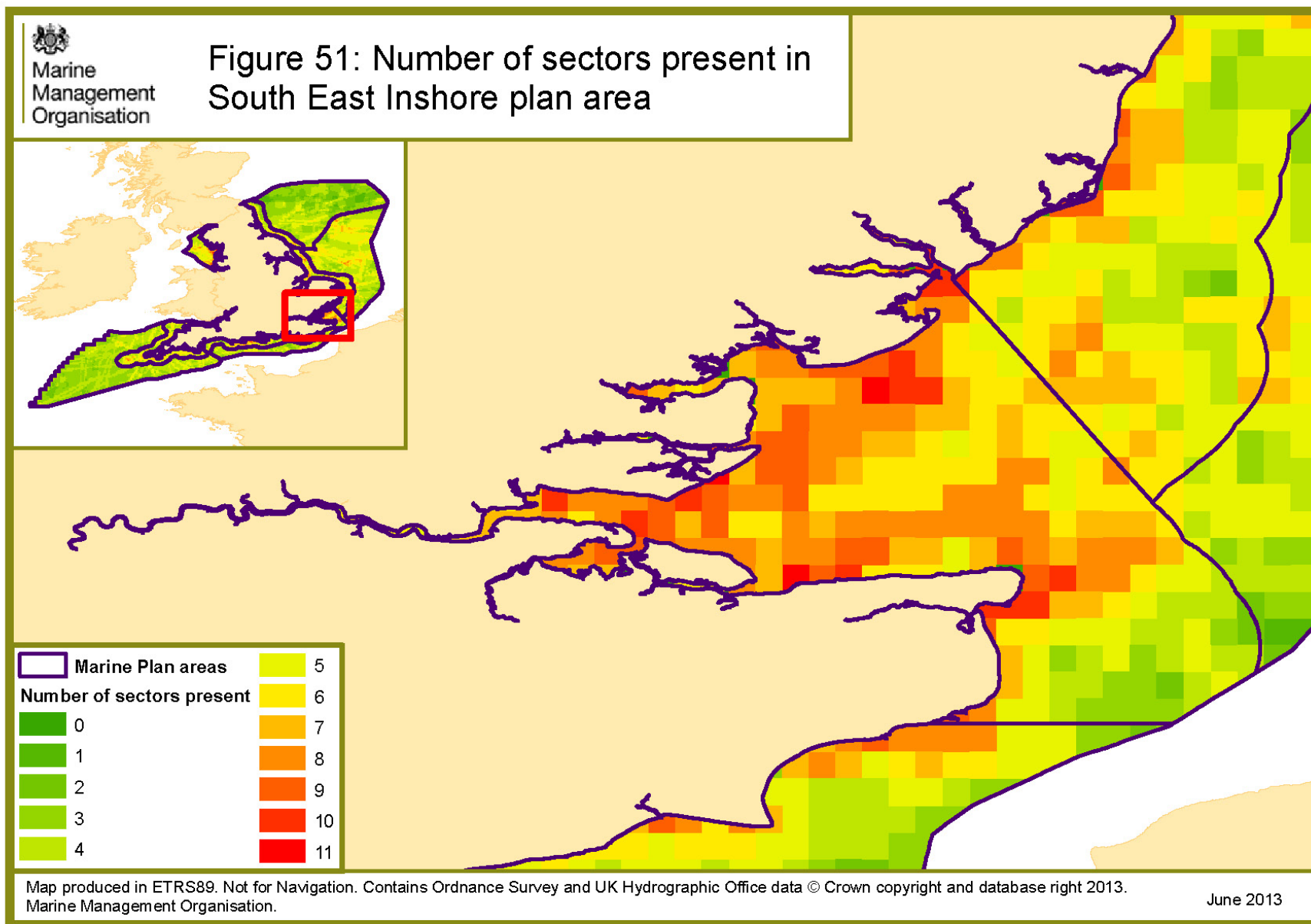
- Many issues emerge in the marine planning process
- Only some of these are able to be addressed through marine planning
- South marine plans SPP – No informal consultation on the document
- Engagement covered across the team, greater use of sector leads.
- Future plan areas –not forgotten part of the overall delivery of 10 marine plans by 2021 no timeline outside of this
- Changing context is the norm: e.g. MSP directive development in progress

## South East – summary statistics

- 21% of UK oil and gas jobs are located here.
- Six SACs and 14 SPAs are located here, including one of only two entirely marine SPAs, the Outer Thames Estuary SPA.
- The area houses 30% of England's ports including Felixstowe (the busiest container port in 2011) and Dover (with the greatest amount of roll-on, roll-off freight). Also construction of Thames Gateway.
- Many submarine cables linking the UK to continental Europe.
- Large concentrations of Pacific and native oyster production sites.
- In short – a very busy area



# South East – busyness density map



# Potential Essex issues from the East Plans

- Consider the ports and shipping policies in relation to navigation
- Look at the fisheries and governance policies in relation to access, displacement and protection of nursery/spawning grounds
- View the dredging policy in relation to disposal sites



**Bear in mind the marine plan will need to be considered for all marine activities from adoption going forward in the East Marine Plan Areas**

# Essex – how you can get involved

- Build on the great work discussed here today in relationship building and partnership working
- Feed into consultations – where appropriate on existing marine planning process
  - Draft East Marine Plans (consultation ends 8<sup>th</sup> October)
  - Evidence base for the South Marine Plan Areas
  - Further consultation stages
- Any appropriate reports/sources of data
  - let us know
- Further areas of investigation
  - Suggestions welcome

## South East/Essex – when will planning start?

- Honest answer – I don't know...because
- Each time all areas are reassessed using the decision streams as identified by Defra
  - Stakeholder engagement in plan area selection.
  - Assessment of coastal stakeholder partnerships.
  - Technical report of economic, environmental and social information.
  - Implications of current and proposed marine protected areas.
  - Future pressures and their implications.
  - Implications of planning inshore and offshore together.
  - Implications of planning with bordering nations.
- Decision making for where next will be in late 2014/early 2015

# Thank you for listening



**Contact us**

[www.marinemanagement.org.uk/marineplanning](http://www.marinemanagement.org.uk/marineplanning)

Email: [planning@marinemanagement.org.uk](mailto:planning@marinemanagement.org.uk)

**Telephone:**

0191 376 2790